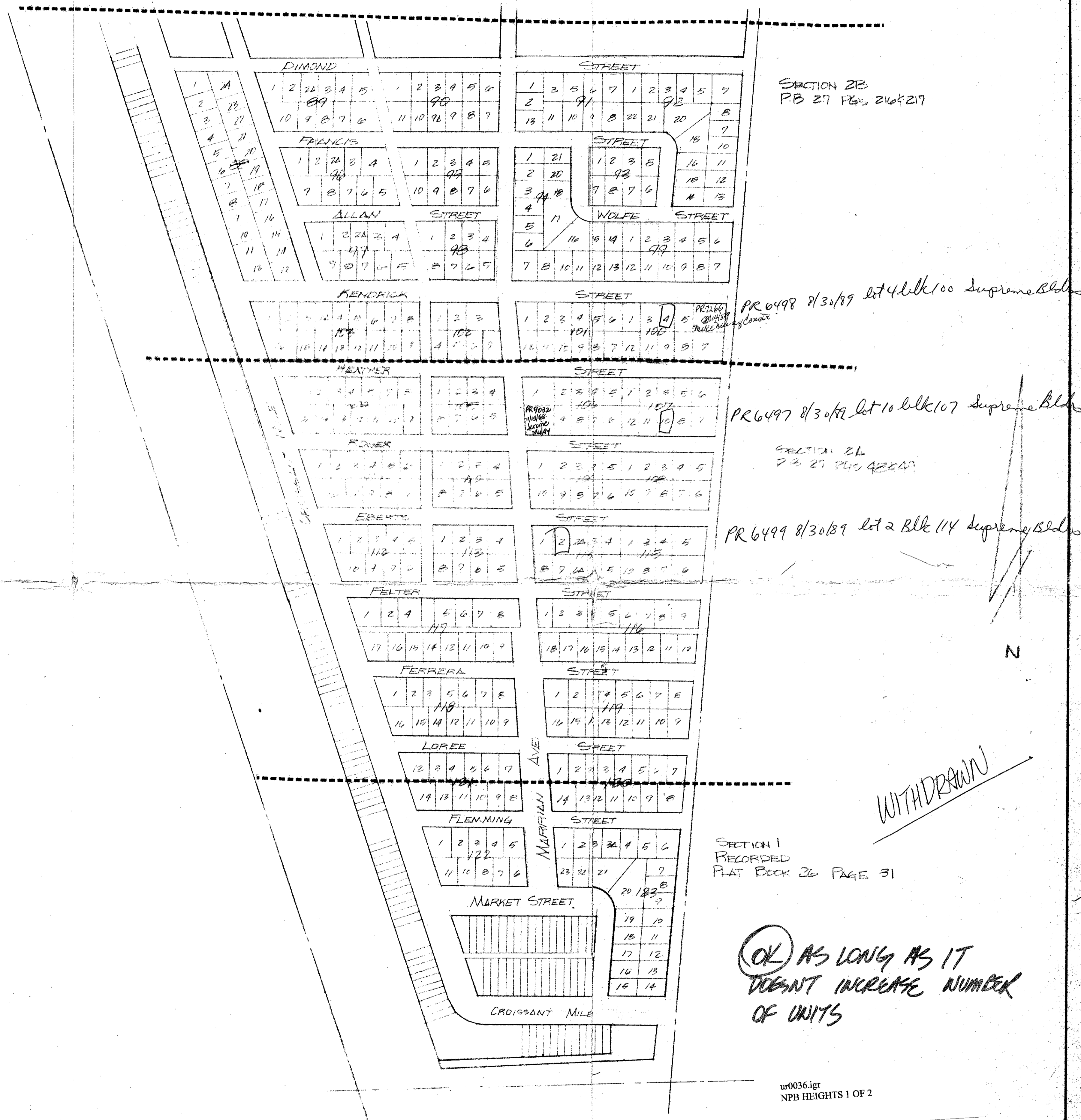
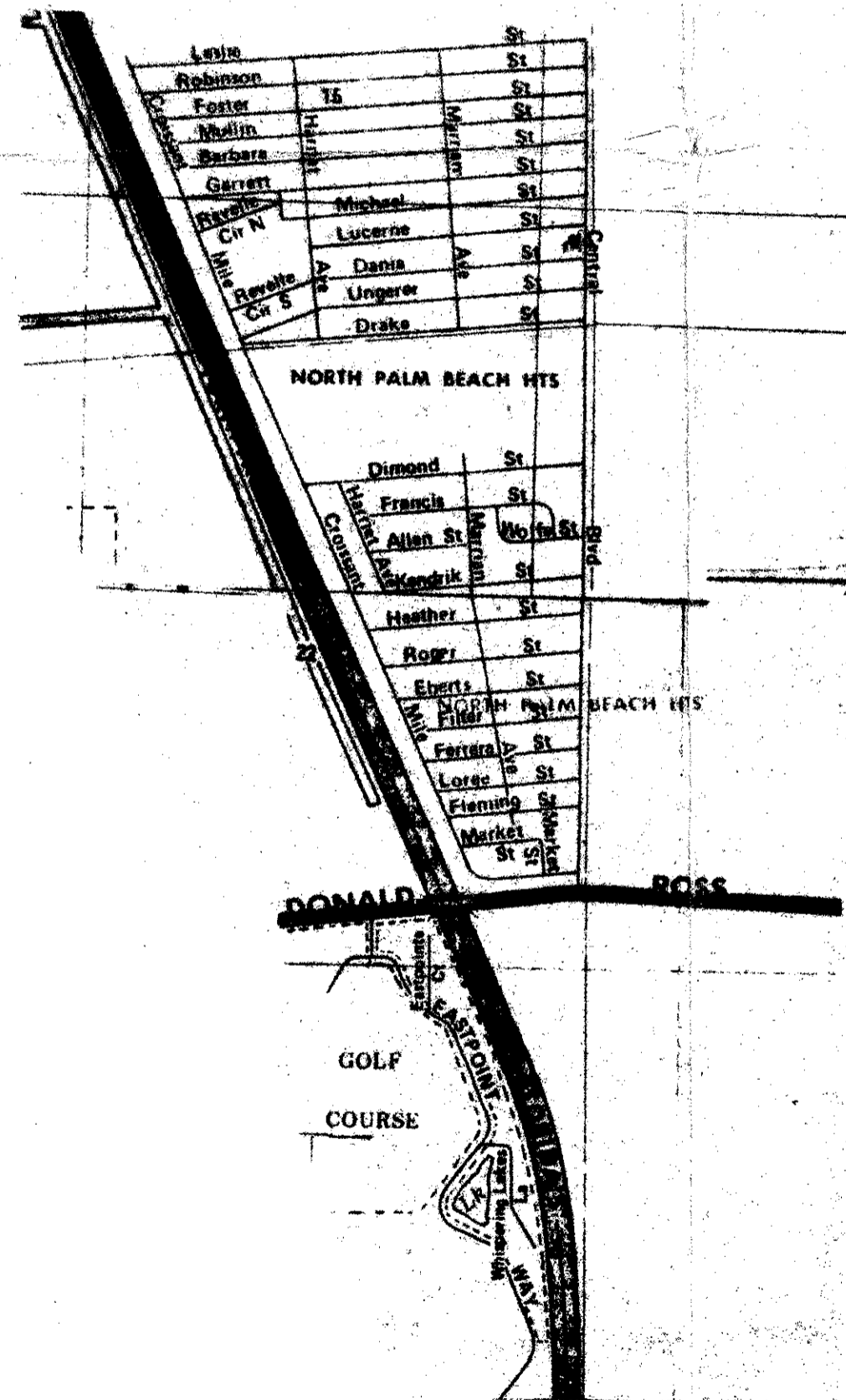


An Affidavit of Exemption from the Palm Beach County Subdivision and Platting Ordinance is being requested for the following described lots.

Lots 3,4,5,6,7,8,9,10,11 Block 88, Lots 1,2,2A,4,7,8,9,10 Block 89, Lots 2,3,4,5,6,7,8,9,10 Block 90, Lots 1 thru 13 inclusive Block 91, Lots 1,2,3,4,5,8,9,12,13,14,15,16,21,23 Block 92, Lots 1,2,3,5,8,9 Block 93, Lots 7,10,11,12,13,14,15,16,20,21 Block 94, Lots 4 thru 10 inclusive Block 95, Lots 2,2A,3,4,6,7,8 Block 96, Lots 2,2A,3,6,7,7A Block 97, Lots 2,3,4 Block 98, Lots 6,13 Block 99, Lots 1,3,7,8,9,11 Block 100, Lots 8,9,10,11,12 Block 101, Lots 4,5,6,7 Block 102, Lots 9 thru 15 inclusive Block 103, Lots 2 thru 5 inclusive Block 105, Lots 2 thru 9 inclusive Block 106, Lots 11,12 Block 107, Lots 4,5 Block 108, Lots 1 thru 10 inclusive Block 109, Lots 1 thru 8 inclusive Block 110, Lots 4,5,6,7,8,9,11 Block 111, Lots 1,7,9 Block 112, Lots 1 thru 7 inclusive Block 113, Lots 1,2,2A,5,6A,7,8 Block 114, Lots 5,6 Block 115, Lots 10,11,12 Block 116, Lots 8,10,11,12,13,14,15, Block 117, Lots 1,2,8,9,14,15,16 Block 118, Lots 1 thru 9 inclusive Block 120, Lots 2,3 Block 122, Lots 1,2,4,5,21,20 Block 123.



SECTION 1  
RECORDED  
PLAT BOOK 26 PAGE 31

OK AS LONG AS IT  
DOESNT INCREASE NUMBER  
OF UNITS

w0036.igr  
NPB HEIGHTS 1 OF 2

DATE	BY	REVISION	DESCRIPTION

NORTH PALM BEACH HEIGHTS SUBDIVISION  
PLATED LOT PLAN